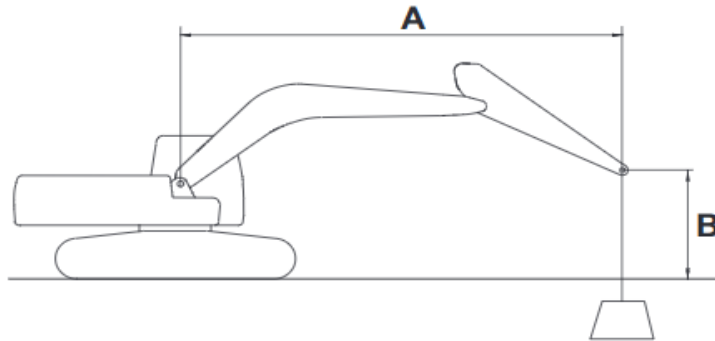


4.6M 붐 & 2.5M 암 & Dozer Up

DX150LC-7



Track Width : 2.59 m (8' 6")
 Boom : 4.6 m (15' 1")
 Arm : 2.5 m (8' 2")
 Bucket : Without Bucket
 Counterweight : 2,200 kg (4,850 lb)
 Shoe : 600 mm (24")
 Dozer : Dozer Up (Rear)
 : Rating Over Front
 : Rating Over Side or 360 degree
 Unit : 1,000 kg (1,000 lb)

DS2102031

그림 13

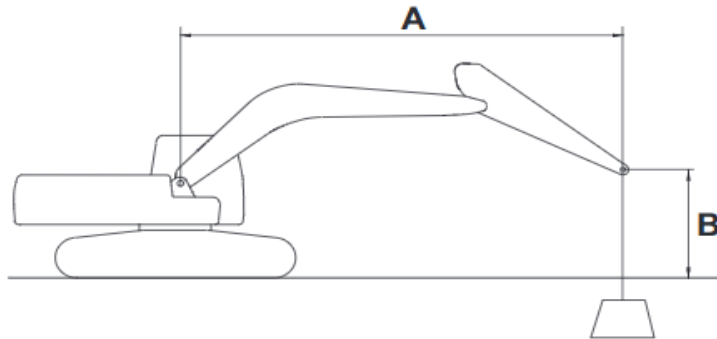
METRIC

1,000 kg



A (m) \ B (m)	1.5		3		4.5		6		MAX. REACH		
											A (m)
7.5									* 2.74	* 2.74	3.61
6					* 3.64	* 3.64			* 2.16	* 2.16	5.42
4.5					* 3.92	* 3.92	* 3.18	2.69	* 2.00	* 2.00	6.39
3			* 6.64	* 6.64	* 4.92	4.04	3.69	2.62	* 1.99	* 1.99	6.91
1.5			* 8.33	6.86	5.58	3.80	3.58	2.52	* 2.10	1.98	7.07
0			* 7.17	6.57	5.39	3.63	3.49	2.44	* 2.36	2.02	6.90
-1.5	* 5.40	* 5.40	* 10.35	6.55	5.32	3.57	3.46	2.42	* 2.89	2.24	6.37
-3	* 9.21	* 9.21	* 9.81	6.66	5.37	3.62			4.13	2.87	5.37

4.6M 붐 & 2.5M 암 & Dozer Down

DX150LC-7



Track Width : 2.59 m (8' 6")
 Boom : 4.6 m (15' 1")
 Arm : 2.5 m (8' 2")
 Bucket : Without Bucket
 Counterweight : 2,200 kg (4,850 lb)
 Shoe : 600 mm (24")
 Dozer : Dozer Down (Rear)











 : Rating Over Front
 : Rating Over Side or 360 degree
 Unit : 1,000 kg (1,000 lb)

DS2102030

그림 12

METRIC

1,000 kg

A (m) \ B (m)	1.5		3		4.5		6		MAX. REACH		
											A (m)
7.5									* 2.74	* 2.74	3.61
6					* 3.64	* 3.64			* 2.16	* 2.16	5.42
4.5					* 3.92	* 3.92	* 3.18	2.69	* 2.00	* 2.00	6.39
3			* 6.64	* 6.64	* 4.92	4.04	3.69	2.62	* 1.99	* 1.99	6.91
1.5			* 8.33	6.86	5.58	3.80	3.58	2.52	* 2.10	1.98	7.07
0			* 7.17	6.57	5.39	3.63	3.49	2.44	* 2.36	2.02	6.90
-1.5	* 5.40	* 5.40	* 10.35	6.55	5.32	3.57	3.46	2.42	* 2.89	2.24	6.37
-3	* 9.21	* 9.21	* 9.81	6.66	5.37	3.62			4.13	2.87	5.37